

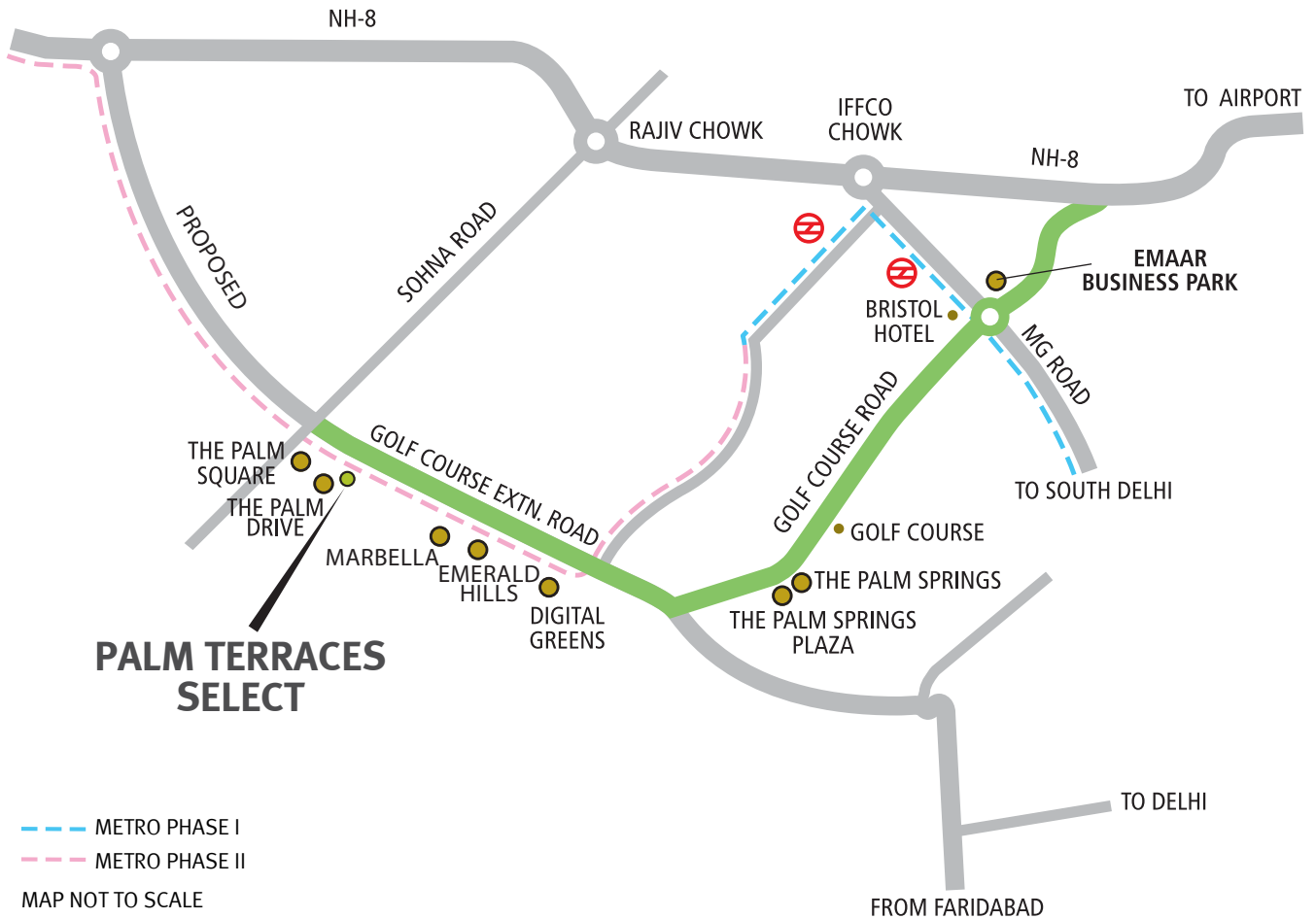
Exclusively for you

Palm Terraces Select
Sector 66, Gurgaon

4 BHK Apartments
5 BHK Duplex Penthouses

Grand View





- On Golf Course extn. road, well connected to NH-8 and IGI (T3) airport
- Metroline coming up in the vicinity
- Close proximity to emerging suburban Business District
- Thriving neighbourhood with schools and hospitals nearby

Highlights

- Clubhouse with heated pool
- Sports facilities with tennis, badminton and basketball courts
- Power back up



Master Plan



Legend

- 1) Main Entrance
- 2) Central Greens
- 3) Club House
- 4) Swimming Pool
- 5) Joggers Track
- 6) Joggers Park
- 7) Tennis Court
- 8) Badminton Court
- 9) Basket Ball
- 10) Basement Ramp
- 11) Green Belt

Tower 1 to 4
(G+9 with Terrace Garden)
 Tower 5, 6, 7, 11 & 12
(G +11 with Pent House)
 Tower 8, 9 & 10
(G +12 with Pent House)

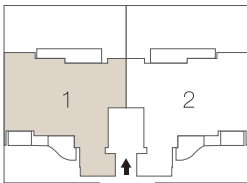
Floor Plan

GROUND FLOOR PLAN

Tower 1 to 4

Size: 2410 sq. ft. (224 sq. mtr.)

4 Bedroom, 4 Bathroom, Utility, S.Room, Front & Rear Lawn and Elevators



In the interest of maintaining high standards, all floor plans, layout plans, areas, dimensions and specifications mentioned are indicative and are subject to change as decided by the company or by any competent authority. Soft furnishing, cupboards, kitchen cabinets, furniture and gadgets are not part of the offering. 1 sq. mtr. = 1.196 sq. yds. & 1 sq. mtr. = 10.764 sq. ft. All dimensions are from Masonry to Masonry.

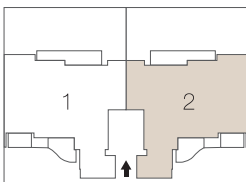
Floor Plan

GROUND FLOOR PLAN

Tower 1 to 4

Size: 2410 sq. ft. (224 sq. mtr.)

4 Bedroom, 4 Bathroom, Utility, S.Room, Front & Rear Lawn and Elevators



In the interest of maintaining high standards, all floor plans, layout plans, areas, dimensions and specifications mentioned are indicative and are subject to change as decided by the company or by any competent authority. Soft furnishing, cupboards, kitchen cabinets, furniture and gadgets are not part of the offering. 1 sq. mtr. = 1.196 sq. yds. & 1 sq. mtr. = 10.764 sq. ft. All dimensions are from Masonry to Masonry.

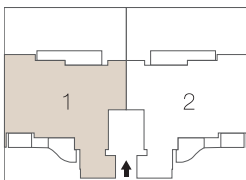
Floor Plan

GROUND FLOOR PLAN

Tower 5 to 12

Size: 2410 sq. ft. (224 sq. mtr.)

4 Bedroom, 4 Bathroom, Utility, S.Room, Front & Rear Lawn and Elevators



In the interest of maintaining high standards, all floor plans, layout plans, areas, dimensions and specifications mentioned are indicative and are subject to change as decided by the company or by any competent authority. Soft furnishing, cupboards, kitchen cabinets, furniture and gadgets are not part of the offering. 1 sq. mtr. = 1.196 sq. yds. & 1 sq. mtr. = 10.764 sq. ft. All dimensions are from Masonry to Masonry.

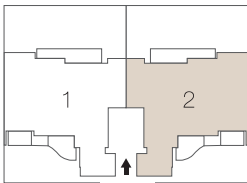
Floor Plan

GROUND FLOOR PLAN

Tower 5 to 12

Size: 2410 sq. ft. (224 sq. mtr.)

4 Bedroom, 4 Bathroom, Utility, S.Room, Front & Rear Lawn and Elevators



In the interest of maintaining high standards, all floor plans, layout plans, areas, dimensions and specifications mentioned are indicative and are subject to change as decided by the company or by any competent authority. Soft furnishing, cupboards, kitchen cabinets, furniture and gadgets are not part of the offering. 1 sq. mtr. = 1.196 sq. yds. & 1 sq. mtr. = 10.764 sq. ft. All dimensions are from Masonry to Masonry.

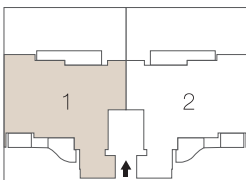
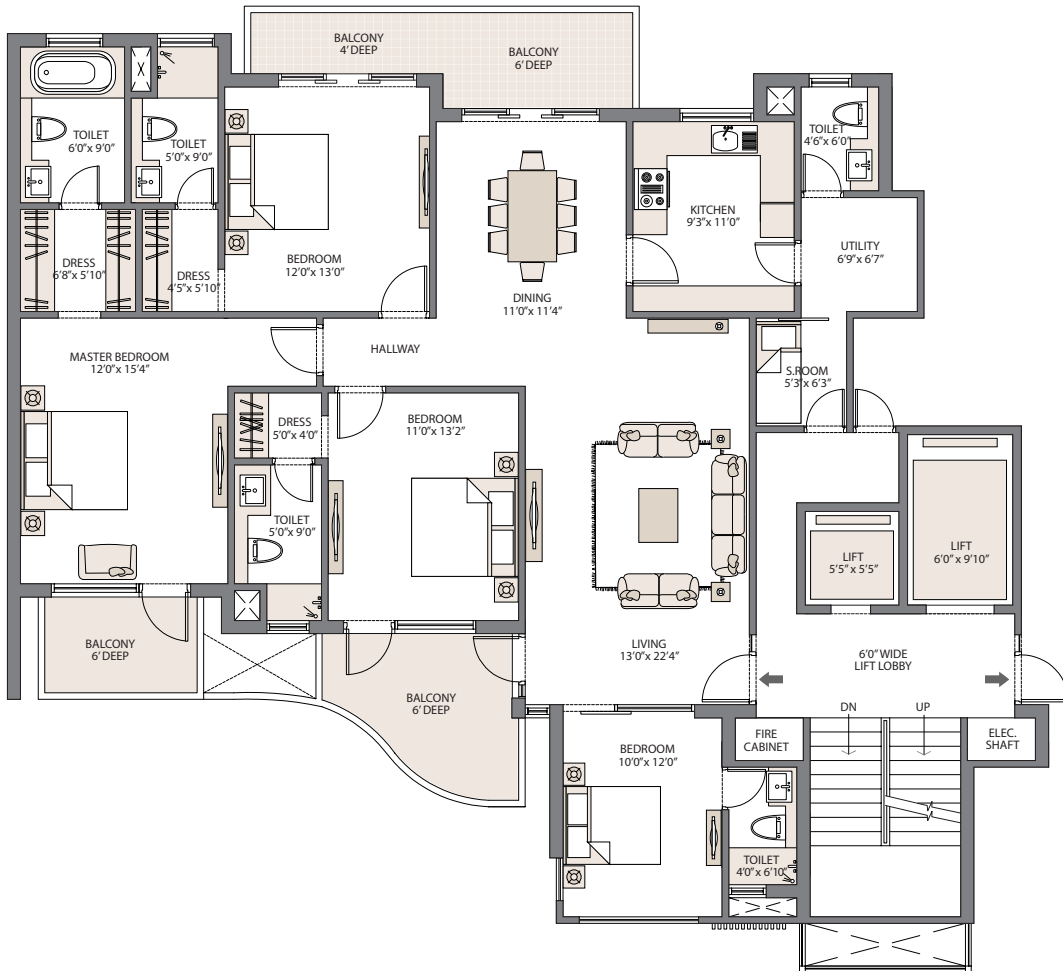
Floor Plan

TYPICAL FLOOR PLAN

Tower 1 to 12

Size: 2410 sq. ft. (224 sq. mtr.)

4 Bedroom, 4 Bathroom, Utility, S.Room, Front & Rear Lawn and Elevators



In the interest of maintaining high standards, all floor plans, layout plans, areas, dimensions and specifications mentioned are indicative and are subject to change as decided by the company or by any competent authority. Soft furnishing, cupboards, kitchen cabinets, furniture and gadgets are not part of the offering. 1 sq. mtr. = 1.196 sq. yds. & 1 sq. mtr. = 10.764 sq. ft. All dimensions are from Masonry to Masonry.

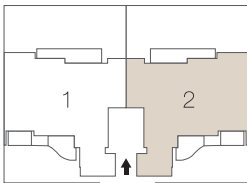
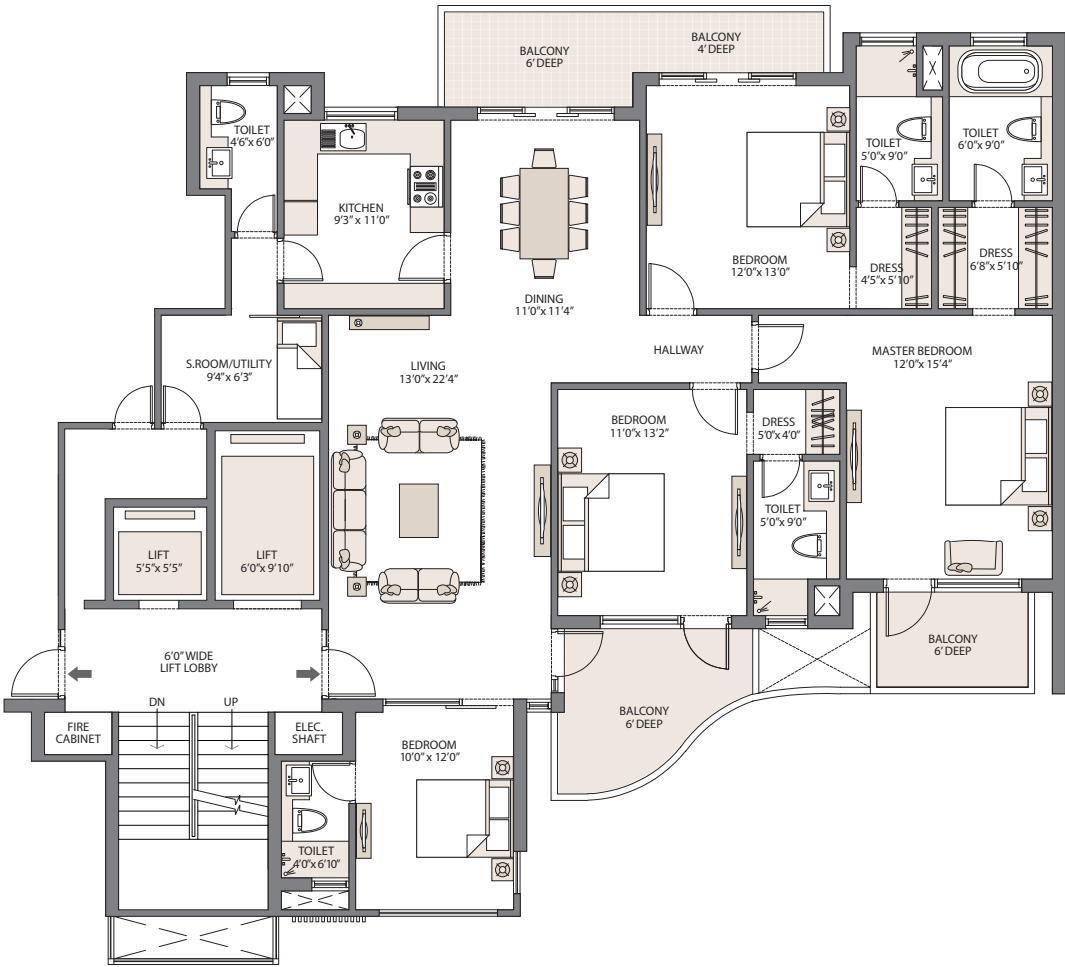
Floor Plan

TYPICAL FLOOR PLAN

Tower 1 to 12

Size: 2410 sq. ft. (224 sq. mtr.)

4 Bedroom, 4 Bathroom, Utility, S.Room, Front & Rear Lawn and Elevators



In the interest of maintaining high standards, all floor plans, layout plans, areas, dimensions and specifications mentioned are indicative and are subject to change as decided by the company or by any competent authority. Soft furnishing, cupboards, kitchen cabinets, furniture and gadgets are not part of the offering. 1 sq. mtr. = 1.196 sq. yds. & 1 sq. mtr. = 10.764 sq. ft. All dimensions are from Masonry to Masonry.

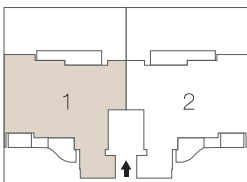
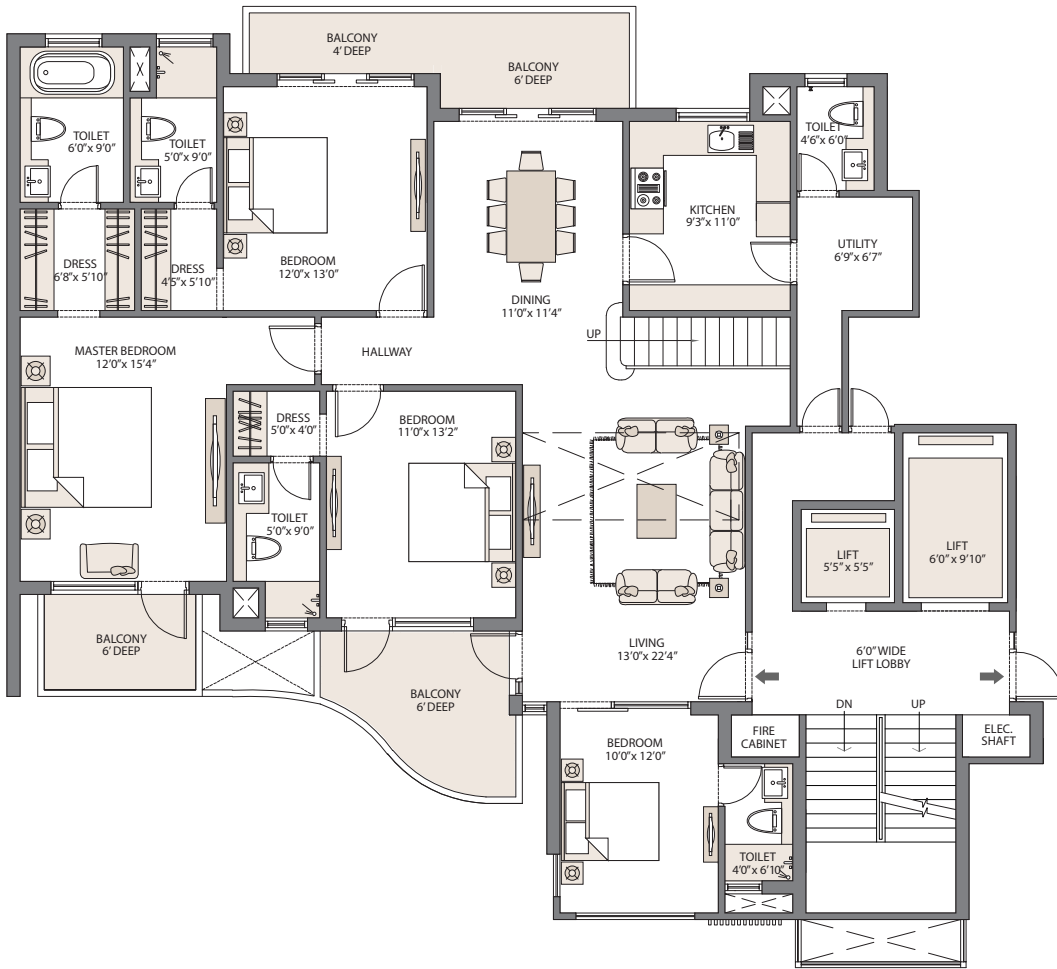
Floor Plan

PENTHOUSE 1

Tower 5 to 12

Size: 3670 sq. ft. (341 sq. mtr.)

5 Bedroom, 5 Bathroom, Utility, S.Room, Party Terrace and Elevators



In the interest of maintaining high standards, all floor plans, layout plans, areas, dimensions and specifications mentioned are indicative and are subject to change as decided by the company or by any competent authority. Soft furnishing, cupboards, kitchen cabinets, furniture and gadgets are not part of the offering. 1 sq. mtr. = 1.196 sq. yds. & 1 sq. mtr. = 10.764 sq. ft. All dimensions are from Masonry to Masonry.

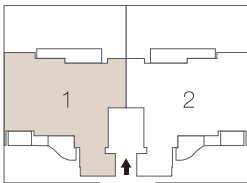
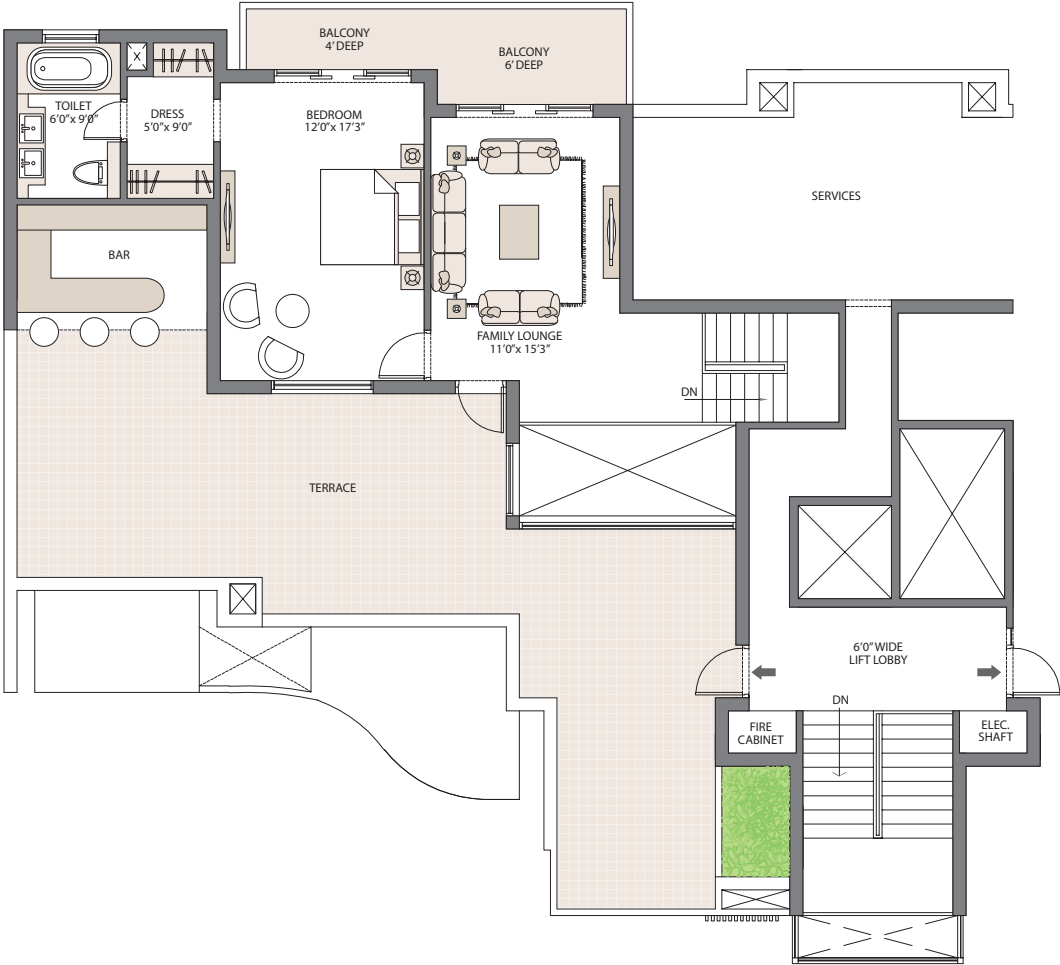
Floor Plan

PENTHOUSE 1

Tower 5 to 12

Size: 3670 sq. ft. (341 sq. mtr.)

5 Bedroom, 5 Bathroom, Utility, S.Room, Party Terrace and Elevators



In the interest of maintaining high standards, all floor plans, layout plans, areas, dimensions and specifications mentioned are indicative and are subject to change as decided by the company or by any competent authority. Soft furnishing, cupboards, kitchen cabinets, furniture and gadgets are not part of the offering. 1 sq. mtr. = 1.196 sq. yds. & 1 sq. mtr. = 10.764 sq. ft. All dimensions are from Masonry to Masonry.

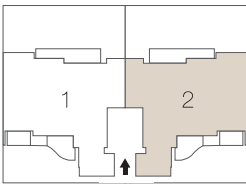
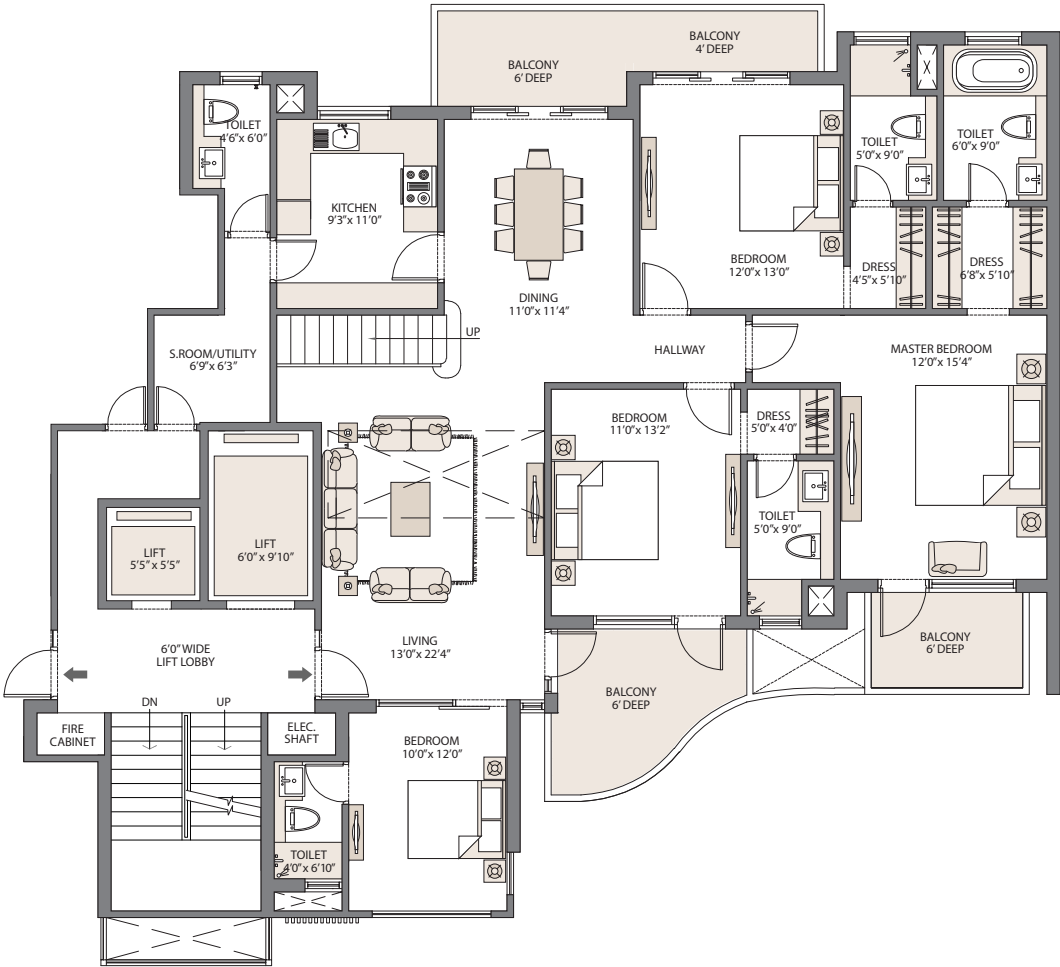
Floor Plan

PENTHOUSE 2

Tower 5 to 12

Size: 3670 sq. ft. (341 sq. mtr.)

5 Bedroom, 5 Bathroom, Utility, S.Room, Party Terrace and Elevators



In the interest of maintaining high standards, all floor plans, layout plans, areas, dimensions and specifications mentioned are indicative and are subject to change as decided by the company or by any competent authority. Soft furnishing, cupboards, kitchen cabinets, furniture and gadgets are not part of the offering. 1 sq. mtr. = 1.196 sq. yds. & 1 sq. mtr. = 10.764 sq. ft. All dimensions are from Masonry to Masonry.

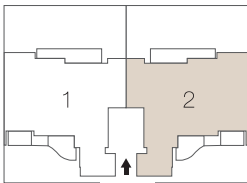
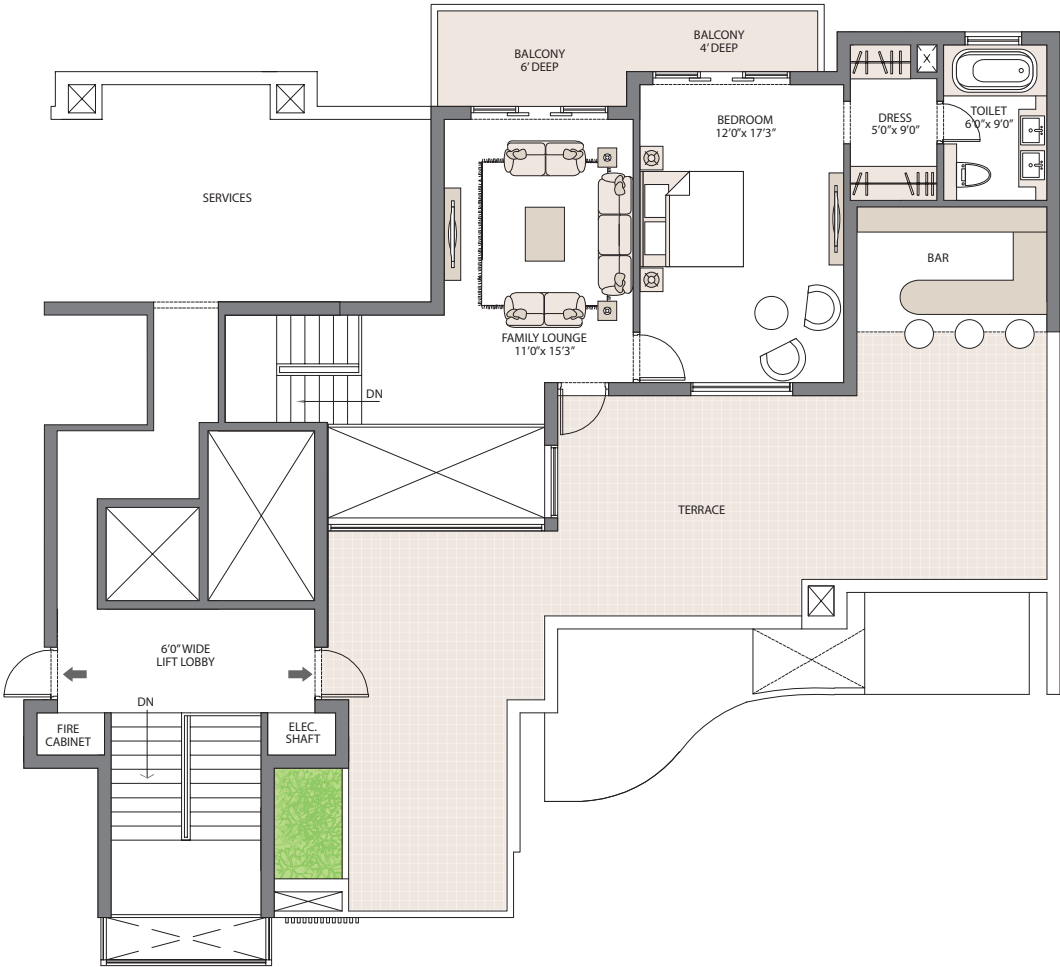
Floor Plan

PENTHOUSE 2

Tower 5 to 12

Size: 3670 sq. ft. (341 sq. mtr.)

5 Bedroom, 5 Bathroom, Utility, S.Room, Party Terrace and Elevators



In the interest of maintaining high standards, all floor plans, layout plans, areas, dimensions and specifications mentioned are indicative and are subject to change as decided by the company or by any competent authority. Soft furnishing, cupboards, kitchen cabinets, furniture and gadgets are not part of the offering. 1 sq. mtr. = 1.196 sq. yds. & 1 sq. mtr. = 10.764 sq. ft. All dimensions are from Masonry to Masonry.

Specification



Living Room/Dining/Lobby/Family Room

- POP punning with acrylic emulsion paint (Walls/Ceiling)
- Imported marble (Floor)
- Internal door: flush door shutters doors
- External door: UPVC/powder coated aluminum doors
- Main entrance door: polished hardwood frame with panelled door shutters
- UPVC/powder coated aluminium window frames and shutters (Windows/Glazing)
- Modular switches

Master Bedroom

- POP punning with acrylic emulsion paint (Walls/Ceiling)
- Wooden laminated (Flooring)
- Internal door: Flush door shutters doors
- External door: UPVC/powder coated aluminum doors
- UPVC/powder coated aluminium window frames and shutters (Windows/Glazing)
- Modular switches

Master Toilet

- Imported marble (Walls/Flooring)
- False ceiling with acrylic emulsion paint (Ceiling)
- Internal door: Flush door shutters
- UPVC/powder coated aluminium window frames and shutters (Windows/Glazing)
- Premium Chinaware, Premium CP Fittings, Marble Counter
- Modular switches

Other Amenities

- Power Back-up
- Sports Facilities with Tennis, Badminton and Basketball Courts
- Tot-Lots, Seesaws, Baby Slides, Sand Pit, Party Area

Security

- Perimeter Security and CCTV in Basement and Main Entrance Lobby for Surveillance

Kitchen

- Ceramic tiles - 2 ft. above counter
- POP punning with acrylic emulsion paint (Walls)
- Vitrified tiles (Flooring)
- POP punning with acrylic emulsion paint (Walls)
- Internal door: Flush door shutters
- External door: UPVC/powder coated aluminum
- Modular switches
- Modular kitchen, granite counter top with back splash in granite, stainless steel sink with double bowl and drainage, CP fittings

Other Bedroom(s)

- POP punning with acrylic emulsion paint (Walls/Ceiling)
- Wooden laminated (Flooring)
- Internal door: Flush door shutters doors
- External door: UPVC/powder coated aluminum doors
- UPVC/powder coated aluminium window frames and shutters (Windows/Glazing)
- Modular switches

Other Toilets

- Ceramic Tiles (Walls)
- Vitrified Tiles (Floor)
- False ceiling with acrylic emulsion paint (Ceiling)
- Internal door: Flush Door Shutters
- UPVC/powder coated aluminium window frames and shutters (Windows/Glazing)
- Premium Chinaware, Premium CP Fittings, Marble Counter
- Modular switches

Club house

- Club with Lounge, Resort style Swimming Pool with Baby Splash, Indoor Heated Pool, Billiards/Pool Room, Health Club Facility with Fully Equipped Unisex Gym Fitted with Cable TV, Jacuzzi, Dance & Aerobics Studio and Multi-Purpose Hall/Function

Balconies and Terraces

- Weather-Proof Paint (Walls/Ceiling)
- Anti-Skid Tiles (Floor)
- External door: UPVC/Powder Coated Aluminum

Step in to the world of Emaar

Emaar is a pioneer in shaping skylines and lifestyles worldwide, developing vibrant communities that have redefined real estate. In 12 countries across the Middle East, Africa, Asia, Europe, USA and Canada; Emaar is developing an impressive land bank of over 196 million sq. ft. Emaar's iconic projects and scale of operations have made it one of the world's leading real estate companies.

In India, Emaar is committed to creating best in class real estate developments that would set unmatched benchmarks in thoughtful architecture, excellent engineering and impeccable execution.

Step in to experience the grandeur!





emaarmgf.com